

Shire of Blacktown

DEVELOPMENT  
**PLAN**

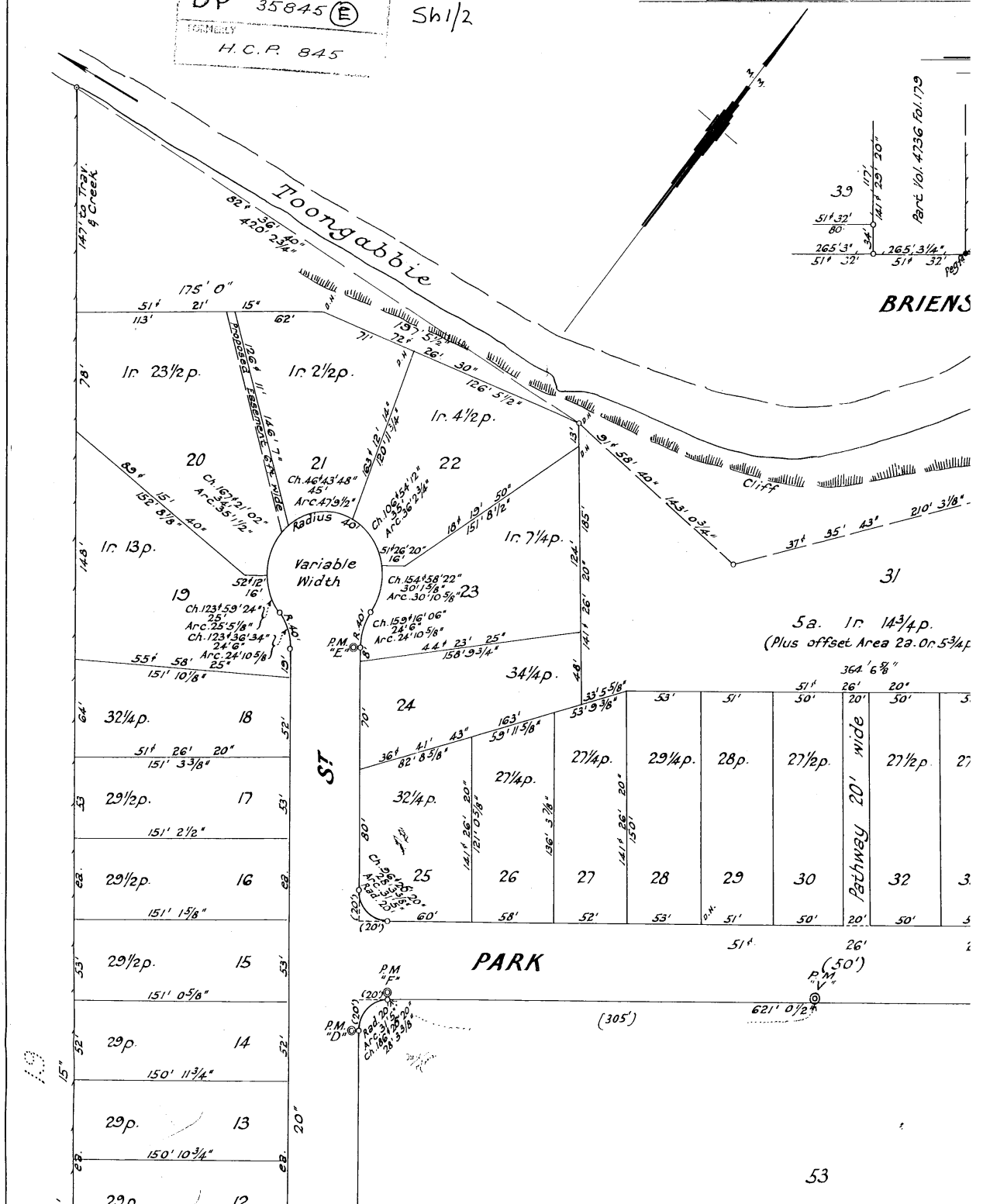
of Subdivision of lands acquired by Housing Comm<sup>n</sup> of N.S.W. by Govt. Gaz.  
Vol.2397 Fol.14 & parts of Vol.4538 Fol.155, Vol.5461 Fol.187, Vol.4736 Fol.179 &

F610511 1:2.52  
(2 Sheets - N<sup>o</sup>1)

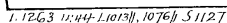
Parish of St John County of

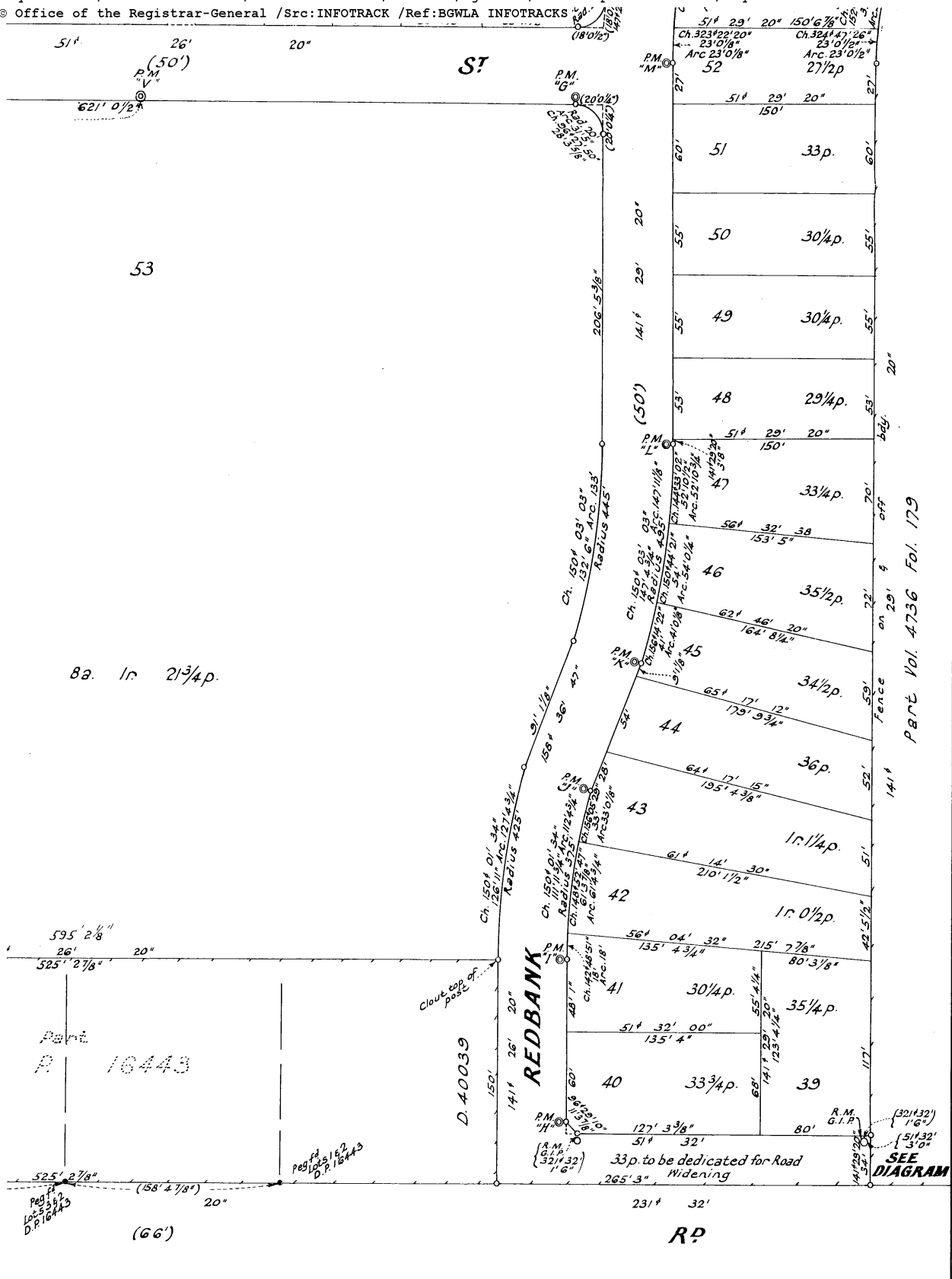
DP 35845 (E) Sh1/2  
FORMERLY  
H.C.P. 845

Scale ~ 60 Feet to an Inch.







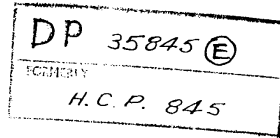


D.P. 35845<sup>1012</sup>

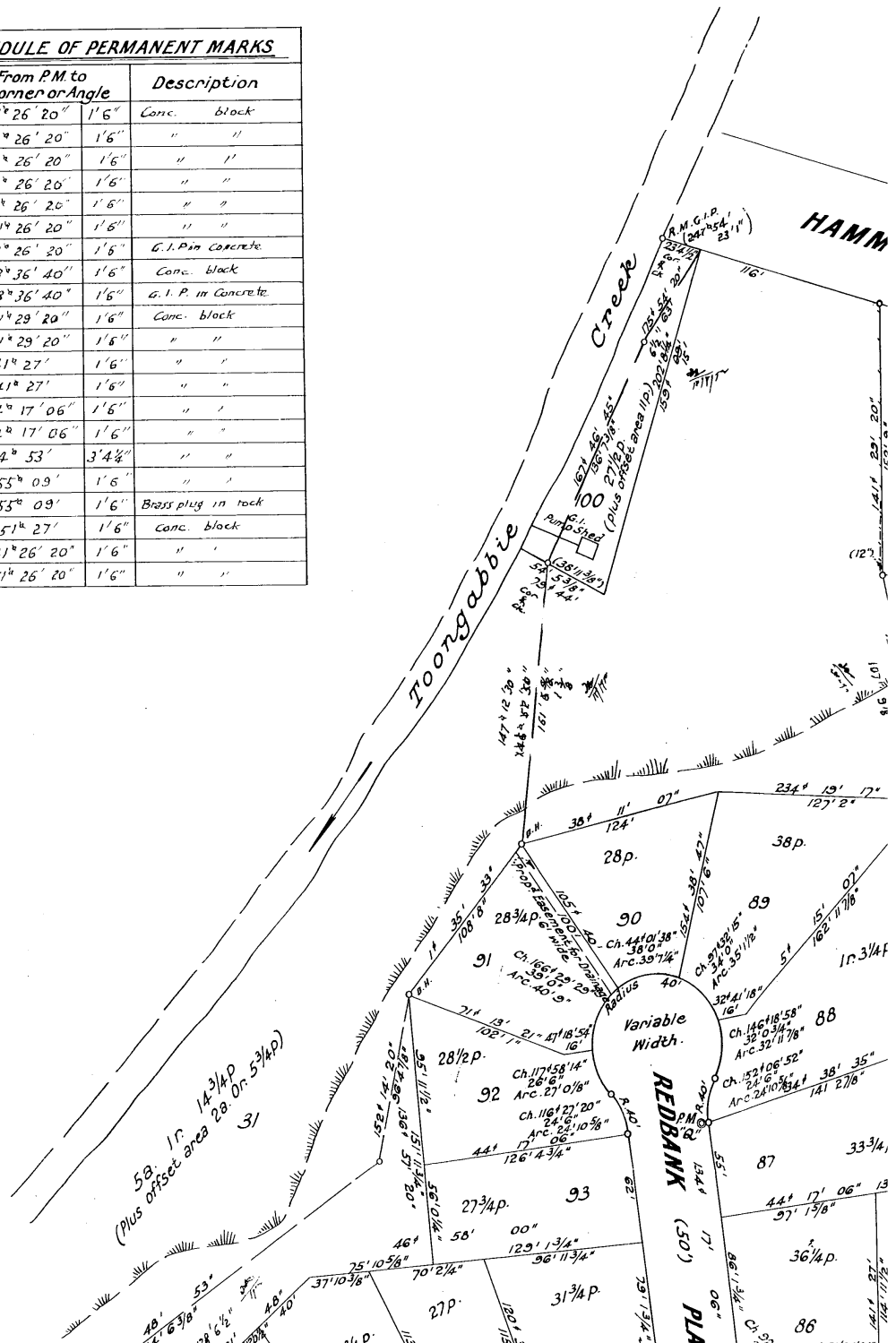
# Shire of Blacktown

Scale ~ 60 Feet to an Inch.

F610511 1.2.52  
 (2 Sheets - No 2)



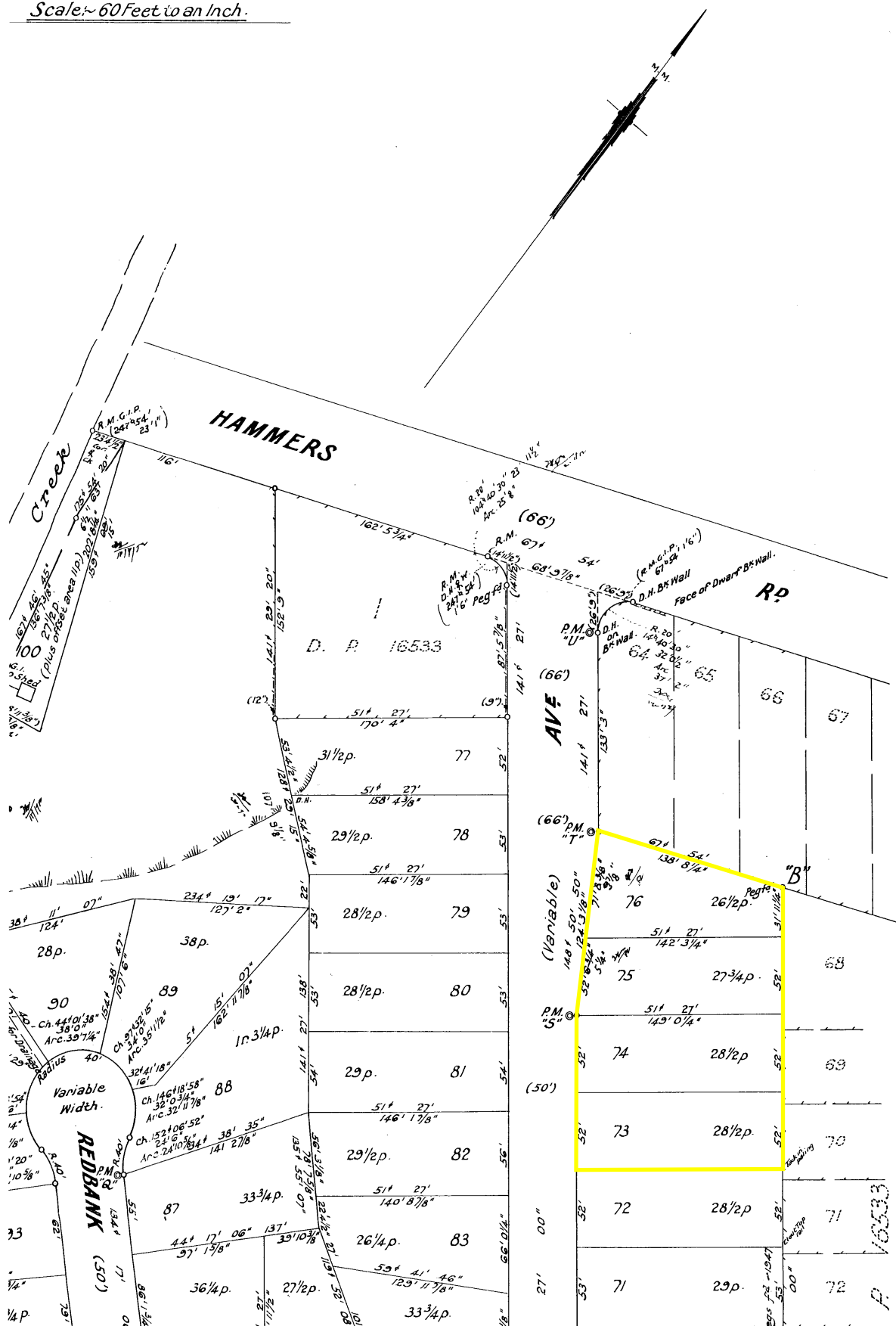
SCHEDULE OF PERMANENT MARKS		
P.M.	From P.M. to Corner or Angle	Description
C	51° 26' 20" 1' 6"	Conc. block
D	51° 26' 20" 1' 6"	" "
E	51° 26' 20" 1' 6"	" "
F	141° 26' 20" 1' 6"	" "
G	141° 26' 20" 1' 6"	" "
H	51° 26' 20" 1' 6"	" "
I	51° 26' 20" 1' 6"	G.I. Pin Concrete
J	68° 36' 40" 1' 6"	Conc. block
K	68° 36' 40" 1' 6"	G.I. P. in Concrete
L	51° 29' 20" 1' 6"	Conc. block
M	51° 29' 20" 1' 6"	" "
N	141° 27' 1' 6"	" "
O	141° 27' 1' 6"	" "
P	44° 17' 06" 1' 6"	" "
Q	44° 17' 06" 1' 6"	" "
R	114° 53' 3' 4"	" "
S	55° 09' 1' 6"	" "
T	55° 09' 1' 6"	Brass plug in rock
U	51° 27' 1' 6"	Conc. block
V	141° 26' 20" 1' 6"	" "
W	51° 26' 20" 1' 6"	" "

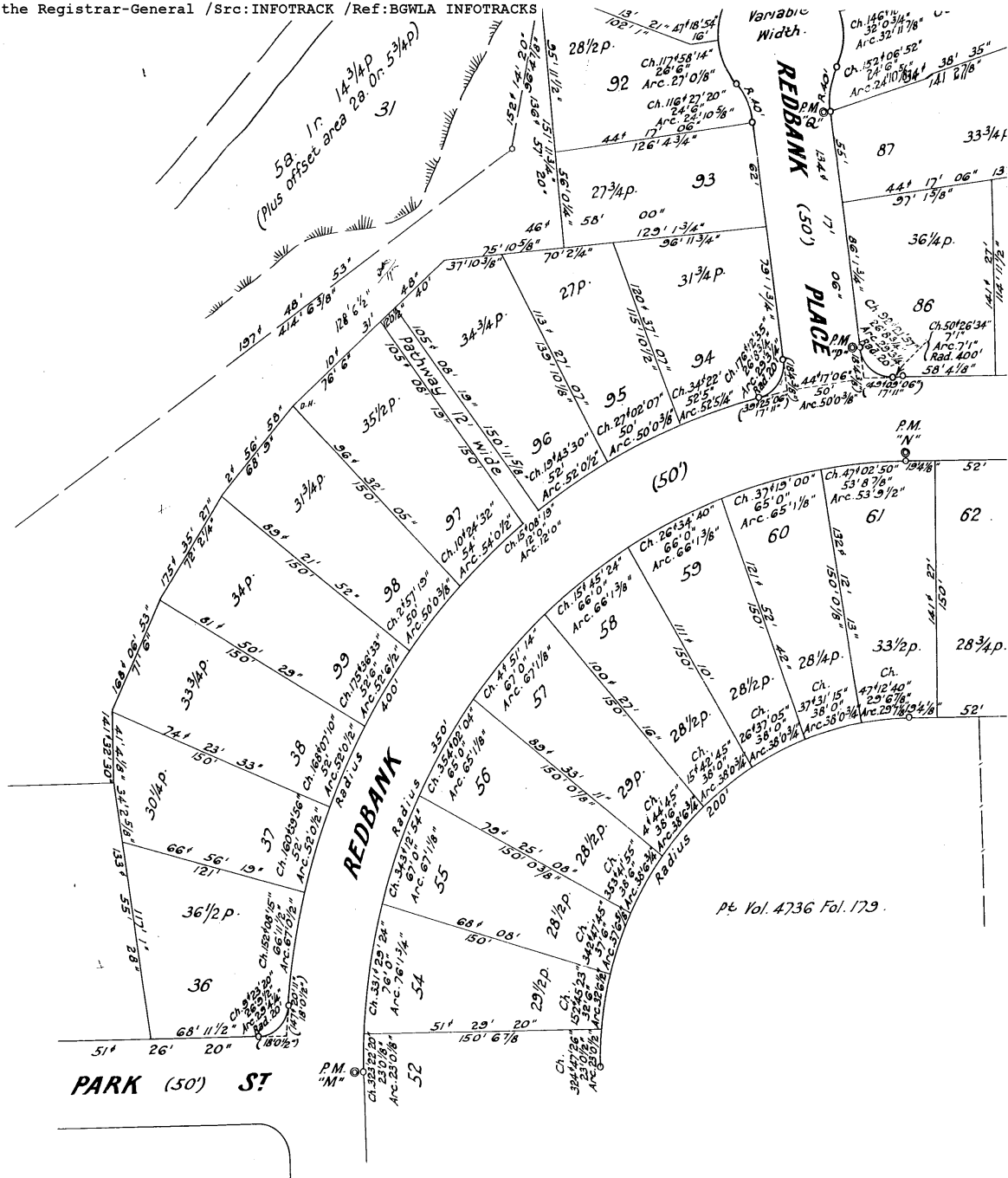


DP 35845(E)

SHEET 2  
(2 Sheets)

*Scale ~ 60 Feet to an Inch.*





I Harold Charles de Low of Parramatta  
 a Surveyor registered under the Surveyors Act 1929  
 hereby declare that permanent marks of the nature  
 and in the positions shown at C-W both inclusive  
 have been placed.

Registered Surveyor.

Subscribed and declared before me at Parramatta  
 this 22<sup>nd</sup> day of Dec 1950

J. P.

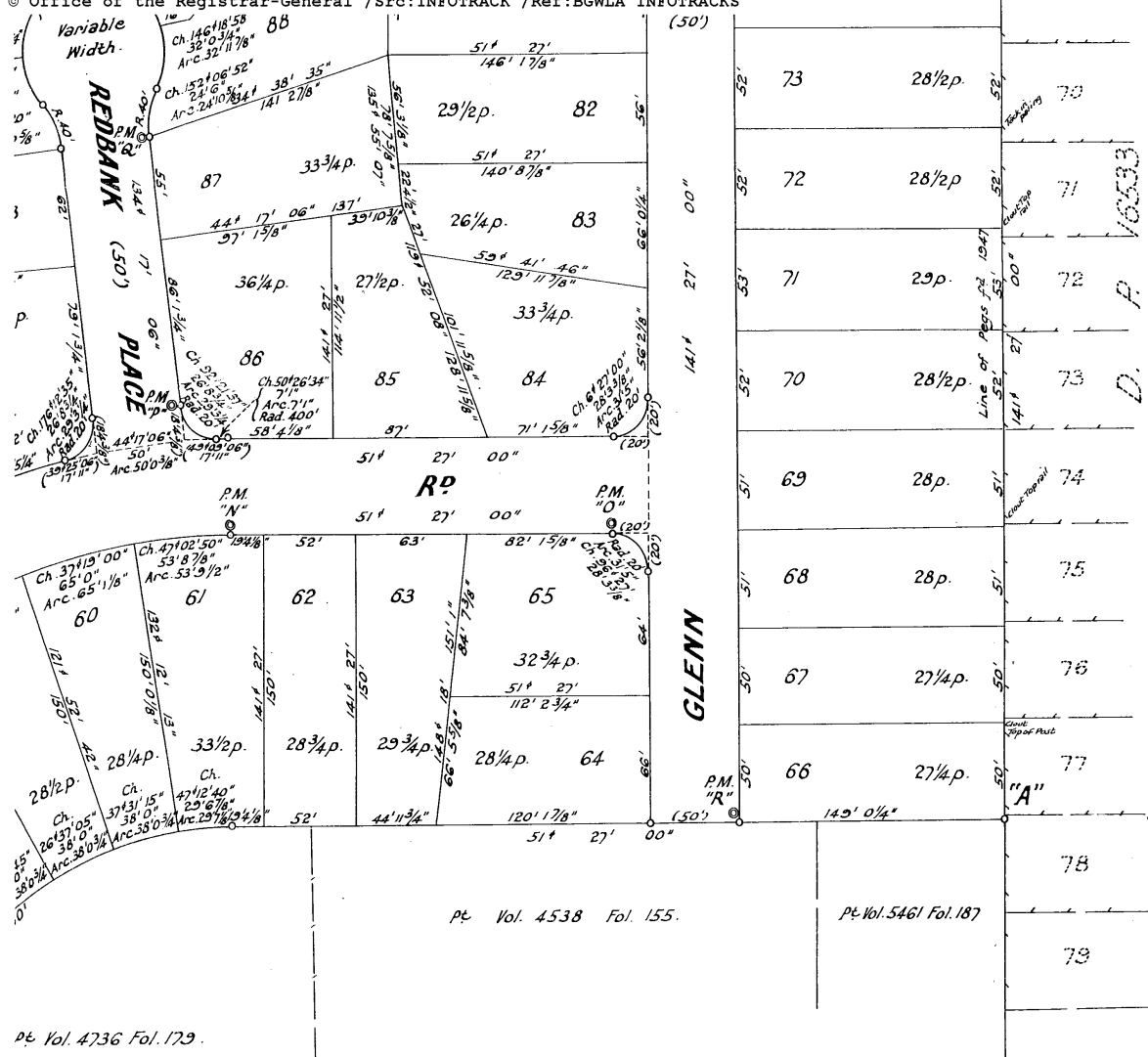
Sh 2/2

Subscribed and declared before me at Parramatta  
 this 22<sup>nd</sup> day of December 1950.

No kerbs laid.

Datum line of Azimuth A-B.

DP 35845



I Harold Charles de Low of Parramatta  
 a Surveyor registered under the Surveyors Act 1929 do hereby solemnly and  
 sincerely declare (a) that all boundaries and measurements shown on this  
 plan are correct, (b) that all survey marks found and relevant physical objects  
 on or adjacent to the boundaries are correctly represented, (c) that all physical  
 objects indicated actually exist in the positions shown, (d) that the whole of the  
 material facts in relation to the land are correctly represented, (e) that the survey  
 represented in this plan has been made in accordance with the Survey Practice  
 Regulations, 1933 by me and was completed on 22<sup>nd</sup> Dec 1950 and the reference  
 marks have been placed as shown hereon.

And I make this solemn declaration conscientiously believing the same  
 to be true by virtue of the provisions of the Oaths Act, 1900.

and declared before me at Parramatta  
 day of December 1950.

(Signature) \_\_\_\_\_

Surveyor registered under the Surveyors Act, 1929

DP 35845 (E) Sh 2/2



CONVERSION TABLE ADDED IN DEPARTMENT OF LANDS			
DP 35845	SH 1/2	FEET INCHES	METRES
1	6	0.457	0.457
2	10 3/4	0.578	0.578
3	10 3/4	0.679	0.679
4	10 3/4	0.780	0.780
5	10 3/4	0.881	0.881
6	10 3/4	0.982	0.982
7	10 3/4	1.083	1.083
8	10 3/4	1.184	1.184
9	10 3/4	1.285	1.285
10	10 3/4	1.386	1.386
11	10 3/4	1.487	1.487
12	10 3/4	1.588	1.588
13	10 3/4	1.689	1.689
14	10 3/4	1.790	1.790
15	10 3/4	1.891	1.891
16	10 3/4	1.992	1.992
17	10 3/4	2.093	2.093
18	10 3/4	2.194	2.194
19	10 3/4	2.295	2.295
20	10 3/4	2.396	2.396
21	10 3/4	2.497	2.497
22	10 3/4	2.598	2.598
23	10 3/4	2.699	2.699
24	10 3/4	2.800	2.800
25	10 3/4	2.901	2.901
26	10 3/4	3.002	3.002
27	10 3/4	3.103	3.103
28	10 3/4	3.204	3.204
29	10 3/4	3.305	3.305
30	10 3/4	3.406	3.406
31	10 3/4	3.507	3.507
32	10 3/4	3.608	3.608
33	10 3/4	3.709	3.709
34	10 3/4	3.810	3.810
35	10 3/4	3.911	3.911
36	10 3/4	4.012	4.012
37	10 3/4	4.113	4.113
38	10 3/4	4.214	4.214
39	10 3/4	4.315	4.315
40	10 3/4	4.416	4.416
41	10 3/4	4.517	4.517
42	10 3/4	4.618	4.618
43	10 3/4	4.719	4.719
44	10 3/4	4.820	4.820
45	10 3/4	4.921	4.921
46	10 3/4	5.022	5.022
47	10 3/4	5.123	5.123
48	10 3/4	5.224	5.224
49	10 3/4	5.325	5.325
50	10 3/4	5.426	5.426
51	10 3/4	5.527	5.527
52	10 3/4	5.628	5.628
53	10 3/4	5.729	5.729
54	10 3/4	5.830	5.830
55	10 3/4	5.931	5.931
56	10 3/4	6.032	6.032
57	10 3/4	6.133	6.133
58	10 3/4	6.234	6.234
59	10 3/4	6.335	6.335
60	10 3/4	6.436	6.436
61	10 3/4	6.537	6.537
62	10 3/4	6.638	6.638
63	10 3/4	6.739	6.739
64	10 3/4	6.840	6.840
65	10 3/4	6.941	6.941
66	10 3/4	7.042	7.042
67	10 3/4	7.143	7.143
68	10 3/4	7.244	7.244
69	10 3/4	7.345	7.345
70	10 3/4	7.446	7.446
71	10 3/4	7.547	7.547

CONVERSION TABLE ADDED IN DEPARTMENT OF LANDS			
DP 35845	SH 1/2	FEET INCHES	METRES
72	10 3/4	7.648	7.648
73	10 3/4	7.749	7.749
74	10 3/4	7.850	7.850
75	10 3/4	7.951	7.951
76	10 3/4	8.052	8.052
77	10 3/4	8.153	8.153
78	10 3/4	8.254	8.254
79	10 3/4	8.355	8.355
80	10 3/4	8.456	8.456
81	10 3/4	8.557	8.557
82	10 3/4	8.658	8.658
83	10 3/4	8.759	8.759
84	10 3/4	8.860	8.860
85	10 3/4	8.961	8.961
86	10 3/4	9.062	9.062
87	10 3/4	9.163	9.163
88	10 3/4	9.264	9.264
89	10 3/4	9.365	9.365
90	10 3/4	9.466	9.466
91	10 3/4	9.567	9.567
92	10 3/4	9.668	9.668
93	10 3/4	9.769	9.769
94	10 3/4	9.870	9.870
95	10 3/4	9.971	9.971
96	10 3/4	10.072	10.072
97	10 3/4	10.173	10.173
98	10 3/4	10.274	10.274
99	10 3/4	10.375	10.375
100	10 3/4	10.476	10.476
101	10 3/4	10.577	10.577
102	10 3/4	10.678	10.678
103	10 3/4	10.779	10.779
104	10 3/4	10.880	10.880
105	10 3/4	10.981	10.981
106	10 3/4	11.082	11.082
107	10 3/4	11.183	11.183
108	10 3/4	11.284	11.284
109	10 3/4	11.385	11.385
110	10 3/4	11.486	11.486
111	10 3/4	11.587	11.587
112	10 3/4	11.688	11.688
113	10 3/4	11.789	11.789
114	10 3/4	11.890	11.890
115	10 3/4	11.991	11.991
116	10 3/4	12.092	12.092
117	10 3/4	12.193	12.193
118	10 3/4	12.294	12.294
119	10 3/4	12.395	12.395
120	10 3/4	12.496	12.496
121	10 3/4	12.597	12.597
122	10 3/4	12.698	12.698
123	10 3/4	12.799	12.799
124	10 3/4	12.900	12.900
125	10 3/4	13.001	13.001
126	10 3/4	13.102	13.102
127	10 3/4	13.203	13.203
128	10 3/4	13.304	13.304
129	10 3/4	13.405	13.405
130	10 3/4	13.506	13.506
131	10 3/4	13.607	13.607
132	10 3/4	13.708	13.708
133	10 3/4	13.809	13.809
134	10 3/4	13.910	13.910
135	10 3/4	14.011	14.011
136	10 3/4	14.112	14.112
137	10 3/4	14.213	14.213
138	10 3/4	14.314	14.314
139	10 3/4	14.415	14.415
140	10 3/4	14.516	14.516
141	10 3/4	14.617	14.617
142	10 3/4	14.718	14.718
143	10 3/4	14.819	14.819
144	10 3/4	14.920	14.920
145	10 3/4	15.021	15.021
146	10 3/4	15.122	15.122
147	10 3/4	15.223	15.223
148	10 3/4	15.324	15.324
149	10 3/4	15.425	15.425
150	10 3/4	15.526	15.526
151	10 3/4	15.627	15.627
152	10 3/4	15.728	15.728
153	10 3/4	15.829	15.829
154	10 3/4	15.930	15.930
155	10 3/4	16.031	16.031
156	10 3/4	16.132	16.132
157	10 3/4	16.233	16.233
158	10 3/4	16.334	16.334
159	10 3/4	16.435	16.435
160	10 3/4	16.536	16.536
161	10 3/4	16.637	16.637
162	10 3/4	16.738	16.738
163	10 3/4	16.839	16.839
164	10 3/4	16.940	16.940
165	10 3/4	17.041	17.041
166	10 3/4	17.142	17.142
167	10 3/4	17.243	17.243
168	10 3/4	17.344	17.344
169	10 3/4	17.445	17.445
170	10 3/4	17.546	17.546
171	10 3/4	17.647	17.647
172	10 3/4	17.748	17.748
173	10 3/4	17.849	17.849
174	10 3/4	17.950	17.950
175	10 3/4	18.051	18.051
176	10 3/4	18.152	18.152
177	10 3/4	18.253	18.253
178	10 3/4	18.354	18.354
179	10 3/4	18.455	18.455
180	10 3/4	18.556	18.556
181	10 3/4	18.657	18.657
182	10 3/4	18.758	18.758
183	10 3/4	18.859	18.859
184	10 3/4	18.960	18.960
185	10 3/4	19.061	19.061
186	10 3/4	19.162	19.162
187	10 3/4	19.263	19.263
188	10 3/4	19.364	19.364
189	10 3/4	19.465	19.465
190	10 3/4	19.566	19.566
191	10 3/4	19.667	19.667
192	10 3/4	19.768	19.768
193	10 3/4	19.869	19.869
194	10 3/4	19.970	19.970
195	10 3/4	20.071	20.071
196	10 3/4	20.172	20.172
197	10 3/4	20.273	20.273
198	10 3/4	20.374	20.374
199	10 3/4	20.475	20.475
200	10 3/4	20.576	20.576

CONVERSION TABLE ADDED DEPARTMENT OF LANDS			
DP 35845	SH 1/2	FEET INCHES	METRES
CONTINUED			
1630	-		4.96,824
AC RD	P	SO M	
-	25 1/2	645	
-	27 1/2	699.2	
-	28 1/2	720.8	
-	28 3/4	727.2	
-	29	733.5	
-	29 1/2	739.8	
-	30 1/4	745.1	
-	30 3/2	750.4	
-	30 3/4	755.1	
-	31 1/4	760.3	
-	31 3/4	765.7	
-	32 1/4	771.1	
-	32 3/4	776.5	
-	33 1/4	781.9	
-	33 3/4	787.3	
-	34 1/4	792.6	
-	34 3/4	797.9	
-	35 1/2	803.3	
-	35 3/4	808.6	
-	36 1/4	813.9	
-	36 3/4	819.2	
-	37 1/4	824.5	
-	37 3/4	829.8	
-	38 1/4	835.1	
-	38 3/4	840.4	
-	39 1/4	845.7	
-	39 3/4	851.0	
-	40 1/4	856.3	
-	40 3/4	861.6	
-	41 1/4	866.9	
-	41 3/4	872.2	
-	42 1/4	877.5	
-	42 3/4	882.8	
-	43 1/4	888.1	
-	43 3/4	893.4	
-	44 1/4	898.7	
-	44 3/4	904.0	
-	45 1/4	909.3	
-	45 3/4	914.6	
-	46 1/4	919.9	
-	46 3/4	925.2	
-	47 1/4	930.5	
-	47 3/4	935.8	
-	48 1/4	941.1	
-	48 3/4	946.4	
-	49 1/4	951.7	
-	49 3/4	957.0	
-	50 1/4	962.3	
-	50 3/4	967.6	
-	51 1/4	972.9	
-	51 3/4	978.2	
-	52 1/4	983.5	
-	52 3/4	988.8	
-	53 1/4	994.1	
-	53 3/4	999.4	
-	54 1/4	1004.7	
-	54 3/4	1010.0	
-	55 1/4	1015.3	
-	55 3/4	1020.6	
-	56 1/4	1025.9	
-	56 3/4	1031.2	
-	57 1/4	1036.5	
-	57 3/4	1041.8	
-	58 1/4	1047.1	
-	58 3/4	1052.4	
-	59 1/4	1057.7	
-	59 3/4	1063.0	
-	60 1/4	1068.3	
-	60 3/4	1073.6	
-	61 1/4	1078.9	
-	61 3/4	1084.2	
-	62 1/4	1089.5	
-	62 3/4	1094.8	
-	63 1/4	1100.1	
-	63 3/4	1105.4	
-	64 1/4	1110.7	
-	64 3/4	1116.0	
-	65 1/4	1121.3	
-	65 3/4	1126.6	
-	66 1/4	1131.9	
-	66 3/4	1137.2	
-	67 1/4	1142.5	
-	67 3/4	1147.8	
-	68 1/4	1153.1	
-	68 3/4	1158.4	
-	69 1/4	1163.7	
-	69 3/4	1169.0	
-	70 1/4	1174.3	
-	70 3/4	1179.6	
-	71 1/4	1184.9	
-	71 3/4	1190.2	
-	72 1/4	1195.5	
-	72 3/4	1200.8	
-	73 1/4	1206.1	
-	73 3/4	1211.4	
-	74 1/4	1216.7	
-	74 3/4	1222.0	
-	75 1/4	1227.3	
-	75 3/4	1232.6	
-	76 1/4	1237.9	
-	76 3/4	1243.2	
-	77 1/4	1248.5	
-	77 3/4	1253.8	
-	78 1/4	1259.1	
-	78 3/4	1264.4	
-	79 1/4	1269.7	
-	79 3/4	1275.0	
-	80 1/4	1280.3	
-	80 3/4	1285.6	
-	81 1/4	1290.9	
-	81 3/4	1296.2	
-	82 1/4	1301.5	
-	82 3/4	1306.8	
-	83 1/4	1312.1	
-	83 3/4	1317.4	
-	84 1/4	1322.7	
-	84 3/4	1328.0	
-	85 1/4	1333.3	
-	85 3/4	1338.6	
-	86 1/4	1343.9	
-	86 3/4	1349.2	
-	87 1/4	1354.5	
-	87 3/4	1359.8	
-	88 1/4	1365.1	
-	88 3/4	1370.4	
-	89 1/4	1375.7	
-	89 3/4	1381.0	
-	90 1/4	1386.3	
-	90 3/4	1391.6	
-	91 1/4	1396.9	
-	91 3/4	1402.2	
-	92 1/4	1407.5	
-	92 3/4	1412.8	
-	93 1/4	1418.1	
-	93 3/4	1423.4	
-	94 1/4	1428.7	
-	94 3/4	1434.0	
-	95 1/4	1439.3	
-	95 3/4	1444.6	
-	96 1/4	1449.9	
-	96 3/4	1455.2	
-	97 1/4	1460.5	
-	97 3/4	1465.8	
-	98 1/4	1471.1	
-	98 3/4	1476.4	
-	99 1/4	1481.7	
-	99 3/4	1487.0	
-	100 1/4	1492.3	
-	100 3/4	1497.6	
-	101 1/4	1502.9	
-	101 3/4	1508.2	
-	102 1/4	1513.5	
-	102 3/4	1518.8	
-	103 1/4	1524.1	
-	103 3/4	1529.4	
-	104 1/4	1534.7	
-	104 3/4	1540.0	
-	105 1/4	1545.3	
-	105 3/4	1550.6	
-	106 1/4	1555.9	
-	106 3/4	1561.2	
-	107 1/4	1566.5	
-	107 3/4	1571.8	
-	108 1/4	1577.1	
-	108 3/4	1582.4	
-	109 1/4	1587.7	
-	109 3/4	1593.0	
-	110 1/4	1598.3	
-	110 3/4	1603.6	
-	111 1/4	1608.9	
-	111 3/4	1614.2	
-	112 1/4	1619.5	
-	112 3/4	1624.8	
-	113 1/4	1630.1	
-	113 3/4	1635.4	
-	114 1/4	1640.7	
-	114 3/4	1646.0	
-	115 1/4	1651.3	
-	115 3/4	1656.6	
-	116 1/4	1661.9	
-	116 3/4	1667.2	
-	117 1/4	1672.5	
-	117 3/4	1677.8	
-	118 1/4	1683.1	
-	118 3/4	1688.4	
-	119 1/4	1693.7	
-	119 3/4	1699.0	
-	120 1/4	1704.3	
-	120 3/4	1709.6	
-	121 1/4	1714.9	
-	121 3/4	1720.2	
-	122 1/4	1725.5	
-	122 3/4	1730.8	
-	123 1/4	1736.1	
-	123 3/4	1741.4	
-	124 1/4	1746.7	
-	124 3/4	1752.0	
-	125 1/4	1757.3	
-	125 3/4	1762.6	
-	126 1/4	1767.9	
-	126 3/4	1773.2	
-	127 1/4	1778.5	
-	127 3/4	1783.8	
-	128 1/4	1789.1	
-	128 3/4	1794.4	
-	129 1/4	1799.7	
-	129 3/4	1805.0	
-	130 1/4	1810.3	
-	130 3/4	1815.6	
-	131 1/4	1820.9	
-	131 3/4	1826.2	
-	132 1/4	1831.5	
-	132 3/4	1836.8	
-	133 1/4	1842.1	
-	133 3/4	1847.4	
-	134 1/4	1852.7	
-	134 3/4	1858.0	
-	135 1/4	1863.3	
-	135 3/4	1868.6	
-	136 1/4	1873.9	
-	136 3/4	1879.2	
-	137 1/4	1884.5	
-	137 3/4	1889.8	
-	138 1/4	1895.1	
-	138 3/4	1900.4	
-	139 1/4	1905.7	
-	139 3/4	1911.0	
-	140 1/4	1916.3	
-	140 3/4	1921.6	
-	141 1/4	1926.9	
-	141 3/4	1932.2	
-	142 1/4	1937.5	
-	142 3/4	1942.8	
-	143 1/4	1948.1	
-	143 3/4	1953.4	
-	144 1/4	1958.7	
-	144 3/4	1964.0	
-	145 1/4	1969.3	
-	145 3/4	1974.6	
-	146 1/4	1979.9	
-	146 3/4	1985.2	
-	147 1/4	1990.5	
-	147 3/4	1995.8	
-	148 1/4	2001.1	
-	148 3/4	2006.4	
-	149 1/4	2011.7	
-	149 3/4	2017.0	
-	150 1/4	2022.3	
-	150 3/4	2027.6	
-	151 1/4	2032.9	
-	151 3/4	2038.2	
-	152 1/4	2043.5	
-	152 3/4	2048.8	
-	153 1/4	2054.1	
-	153 3/4	2059.4	
-	154 1/4	2064.7	
-	154 3/4	2070.0	
-	155 1/4	2075.3	
-	155 3/4	2080.6	
-	156 1/4	2085.9	
-	156 3/4	2091.2	
-	157 1/4	2096.5	
-	157 3/4	2101.8	
-	158 1/4	2107.1	
-	158 3/4	2112.4	
-	159 1/4	2117.7	
-	159 3/4	2123.0	
-	160 1/4	2128.3	
-	160 3/4	2133.6	
-	161 1/4	2138.9	
-	161 3/4	2144.2	
-	162 1/4	2149.5	
-	162 3/4	2154.8	
-	163 1/4	2160.1	
-	163 3/4	2165.4	
-	164 1/4	2170.7	
-	164 3/4	2176.0	
-	165 1/4	2181.3	
-	165 3/4	2186.6	
-	166 1/4	2191.9	
-	166 3/4	2197.2	
-	167 1/4	2202.5	
-	167 3/4	2207.8	
-	168 1/4	2213.1	
-	168 3/4	2218.4	
-	169 1/4	2223.7	
-	169 3/4	2229.0	
-	170 1/4	2234.3	
-	170 3/4	2239.6	
-	171 1/4	2244.9	
-	171 3/4	2250.2	
-	172 1/4	2255.5	
-	172 3/4	2260.8	
-	173 1/4	2266.1	
-	173 3/4	2271.4	
-	174 1/4	2276.7	
-	174 3/4	2282.0	
-	175 1/4	2287.3	
-	175 3/4	2292.6	
-	176 1/4	2297.9	
-	176 3/4	2303.2	
-	177 1/4	2308.5	
-	177 3/4	2313.8	
-	178 1/4	2319.1	
-	178 3/4	2324.4	
-	179 1/4	2329.7	
-	179 3/4	2335.0	
-	180 1/4	2340.3	
-	180 3/4	2345.6	
-	181 1/4	2350.9	
-	181 3/4	2356.2	
-	182 1/4	2361.5	
-	182 3/4	2366.8	
-	183 1/4	2372.1	
-	183 3/4	2377.4	
-	184 1/4	2382.7	
-	184 3/4	2388.0	
-	185 1/4	2393.3	
-	185 3/4	2398.6	
-	186 1/4	2403.9	
-	186 3/4	2409.2	
-	187 1/4	2414.5	
-	187 3/4	2419.8	
-	188 1/4	2425.1	
-	188 3/4	2430.4	
-	189 1/4	2435.7	
-	189 3/4	2441.0	
-	190 1/4	2446.3	
-	190 3/4	2451.6	
-	191 1/4	2456.9	
-	191 3/4	2462.2	
-	192 1/4	2467.5	
-	192 3/4	2472.8	
-	193 1/4	2478.1	
-	193 3/4	2483.4	
-	194 1/4	2488.7	
-	194 3/4	2494.0	
-	195 1/4	2499.3	
-	195 3/4	2504.6	
-	196 1/4	2509.9	
-	196 3/4	2515.2	
-	197 1/4	2520.5	
-	197 3/4	2525.8	
-	198 1/4	2531.1	
-	198 3/4	2536.4	
-	199 1/4	2541.	



FOLIO: 73/35845

-----

SEARCH DATE	TIME	EDITION NO	DATE
-----	----	-----	----
6/4/2020	12:31 PM	-	-

VOL 13313 FOL 181 IS THE CURRENT CERTIFICATE OF TITLE

LAND

----

LOT 73 IN DEPOSITED PLAN 35845

AT NORTHMEAD

LOCAL GOVERNMENT AREA CITY OF PARRAMATTA

PARISH OF ST JOHN COUNTY OF CUMBERLAND

TITLE DIAGRAM DP35845

FIRST SCHEDULE

-----

THE HOUSING COMMISSION OF NEW SOUTH WALES

SECOND SCHEDULE (0 NOTIFICATIONS)

-----

NIL

NOTATIONS

-----

UNREGISTERED DEALINGS: NIL

\*\*\* END OF SEARCH \*\*\*



FOLIO: 74/35845

-----

SEARCH DATE	TIME	EDITION NO	DATE
-----	----	-----	----
6/4/2020	12:31 PM	-	-

VOL 13313 FOL 182 IS THE CURRENT CERTIFICATE OF TITLE

LAND

----

LOT 74 IN DEPOSITED PLAN 35845

AT NORTHMEAD

LOCAL GOVERNMENT AREA CITY OF PARRAMATTA

PARISH OF ST JOHN COUNTY OF CUMBERLAND

TITLE DIAGRAM DP35845

FIRST SCHEDULE

-----

THE HOUSING COMMISSION OF NEW SOUTH WALES

SECOND SCHEDULE (0 NOTIFICATIONS)

-----

NIL

NOTATIONS

-----

UNREGISTERED DEALINGS: NIL

\*\*\* END OF SEARCH \*\*\*



FOLIO: 75/35845

-----

SEARCH DATE	TIME	EDITION NO	DATE
-----	----	-----	----
6/4/2020	12:31 PM	-	-

VOL 13313 FOL 183 IS THE CURRENT CERTIFICATE OF TITLE

LAND

----

LOT 75 IN DEPOSITED PLAN 35845

AT NORTHMEAD

LOCAL GOVERNMENT AREA CITY OF PARRAMATTA

PARISH OF ST JOHN COUNTY OF CUMBERLAND

TITLE DIAGRAM DP35845

FIRST SCHEDULE

-----

THE HOUSING COMMISSION OF NEW SOUTH WALES

SECOND SCHEDULE (0 NOTIFICATIONS)

-----

NIL

NOTATIONS

-----

UNREGISTERED DEALINGS: NIL

\*\*\* END OF SEARCH \*\*\*



FOLIO: 76/35845

-----

SEARCH DATE	TIME	EDITION NO	DATE
-----	----	-----	----
6/4/2020	12:31 PM	-	-

VOL 13313 FOL 184 IS THE CURRENT CERTIFICATE OF TITLE

LAND

----

LOT 76 IN DEPOSITED PLAN 35845

AT NORTHMEAD

LOCAL GOVERNMENT AREA CITY OF PARRAMATTA

PARISH OF ST JOHN COUNTY OF CUMBERLAND

TITLE DIAGRAM DP35845

FIRST SCHEDULE

-----

THE HOUSING COMMISSION OF NEW SOUTH WALES

SECOND SCHEDULE (0 NOTIFICATIONS)

-----

NIL

NOTATIONS

-----

UNREGISTERED DEALINGS: NIL

\*\*\* END OF SEARCH \*\*\*